

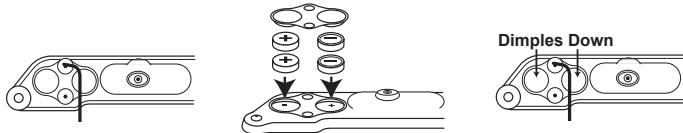
### Auto-Off Feature:

- After 5 minutes in any mode, warning pulse will activate.
- After 1 minute in warning pulse mode, laser will turn off.
- Press the switch during warning pulse for laser reset.



### Batteries: 4-377 batteries

- Use Allen wrench .050 to remove battery cover.
- Polarity marked on board inside of battery compartment.
- Note: Dimples on battery cover must be face down.
- Tighten down the battery cover and check periodically.



**WARRANTY:**  
Three Year  
Limited Warranty.



30 N. Alamos Dr. - Cottonwood, AZ 86326  
Phone 928-649-3201 - Fax 928-649-3970  
[www.LaserLyte.com](http://www.LaserLyte.com)



### SIDE MOUNT LASER



- Fits Ruger® LCP, Kel-Tec® .380 ACP & .32 ACP
- Quick and Easy installation
- Works with most pocket holsters
- Ergonomic activation
- Dual laser modes with auto-off feature

## KEL-TEC® /RUGER® .380 ACP SIDE MOUNT LASER

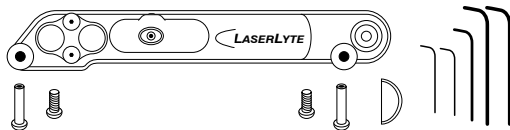


REV0912

[www.LASERLYTE.com](http://www.LASERLYTE.com)

## Kel-Tec®/Ruger® .380 ACP Side Mount Laser

CK-AMF



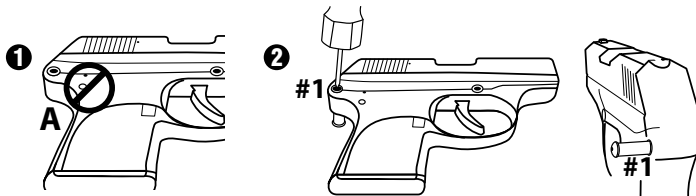
Read instructions completely before installing your laser. Failure to do so may result in damage to your laser or firearm.

### Installation:

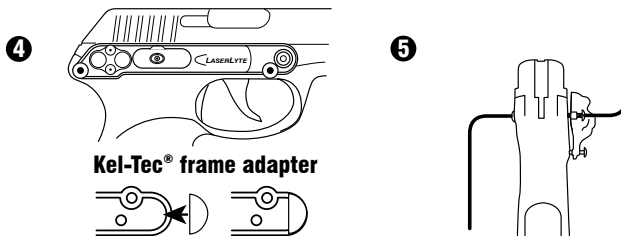
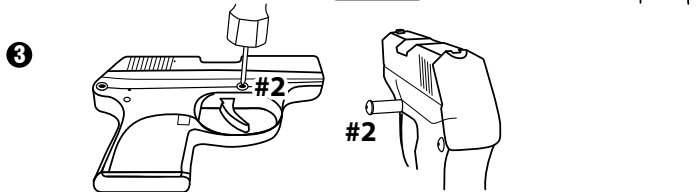
- **UNLOAD FIREARM.**
  - Place on a raised surface.
  - Attach danger label to side of gun near laser with arrow pointing toward front sight.
- 1 **DO NOT REMOVE THIS PIN. (FIGURE A)**
  - 2 Using punch and small hammer remove Ruger® Frame Pin #1. Insert LaserLyte® Frame Insert Pin.
  - 3 Tap out Pin #2 and replace with LaserLyte® Insert Pin.
  - 4 Place laser on gun, align holes and insert screws.
  - (Kel-Tec® use frame adapter, then mount.)
  - 5 Use both .062 Allen wrenches to tighten screws until snug. Do not over tighten! Tighten down the battery cover and check periodically.

The two LaserLyte® frame pin screws are pre-loaded with a self-locking nylon patch. If you un-install the CK-AMF, re-apply a self-locking material such as Lock-tite® Threadlocker Blue 242® to the LaserLyte® frame pin screws before re-installing the laser.

### Unload firearm.

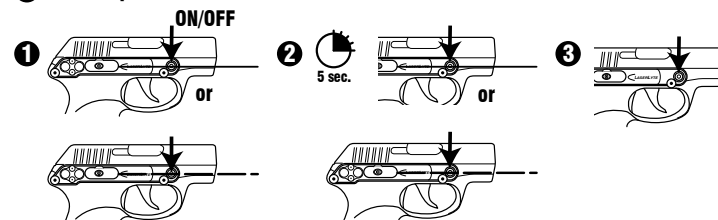


Attach danger label to slide of gun near laser with arrow pointing toward front sight.



### Activation:

- 1 Press once turns laser on: constant or pulse.
- 2 Press and hold for 5 seconds to change mode.
- 3 Second press turns laser off.



### Laser Sight In:

- 1 Use the provided .035 Allen wrench to adjust the sight.
- 2 Always end adjustments on a clockwise turn.
- 3 Make final adjustments at shooting range.

