

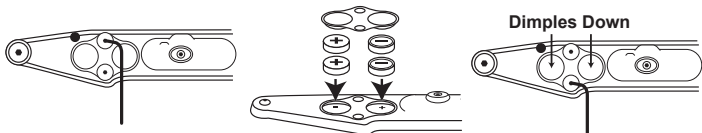
Auto-Off Feature:

- After 5 minutes in any mode, warning mode pulse will activate.
- After 1 minute in warning pulse mode, laser will turn off.
- Press the switch during warning pulse for laser reset.



Batteries: 4-377 batteries

- Use Allen wrench .050 to remove battery cover
- Polarity marked on board inside of battery compartment.
- Note: Dimples on battery cover must be face down.
- Tighten down the battery cover and check periodically.



WARRANTY:
Three Year
Limited Warranty.



30 N. Alamos Drive - Cottonwood, AZ 86326
Phone 928-649-3201 - Fax 928-649-3970
www.LaserLyte.com



SIDE MOUNT LASER



- Fits Ruger® LC9 and Kel-Tec® PF9
- Quick and Easy installation
- Works with most pocket holsters
- Ergonomic activation
- Dual laser modes with auto-off feature



KEL-TEC®/RUGER® 9MM SIDE MOUNT LASER



CK-AMF9

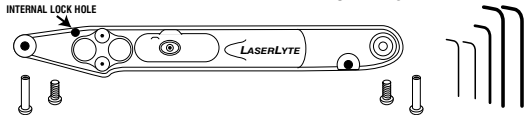


www.LASERLYTE.com



REV0912

Kel-Tec®/Ruger® 9mm Side Mount Laser
CK-AMF9



Read instructions completely before installing your laser. Failure to do so may result in damage to your laser or firearm.

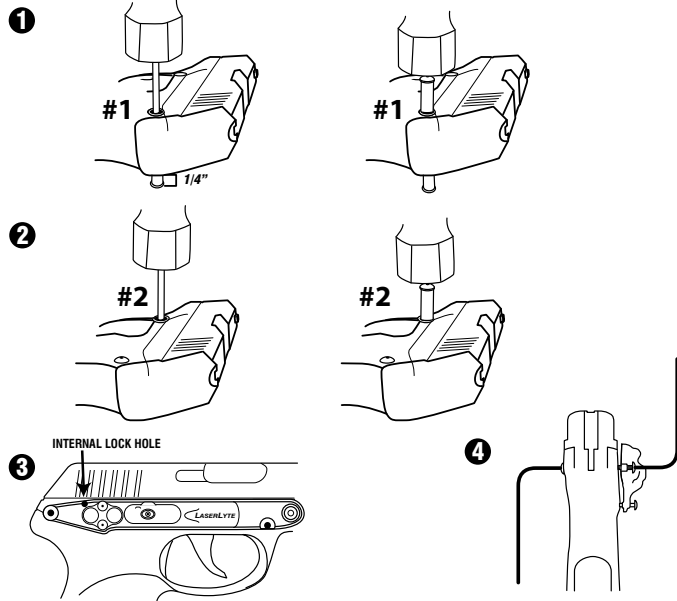
Installation:

- **UNLOAD FIREARM.**
- **Place on a raised surface.**
- **Attach danger label to side of gun near laser with arrow pointing toward front sight.**
- ① **Using punch and small hammer, drift pin #1 out no more than 1/4". Immediately insert LaserLyte® mounting pin and tap into place, completely replacing pin #1.**
- ② **Follow the steps for pin #2 exactly as pin #1**
- ③ **Place laser on gun, align holes and insert screws.** Do not block internal lock hole (N/A for Keltec®).
- ④ **Use both .062 Allen wrenches to tighten screws until snug. Do not over tighten! Tighten down the battery cover, and check periodically.**

The two LaserLyte® frame pin screws are pre-loaded with a self-locking nylon patch. If you un-install the CK-AMF9, re-apply a self-locking material such as Lock-tite® Threadlocker Blue 242® to the LaserLyte® frame pin screws before re-installing the laser.

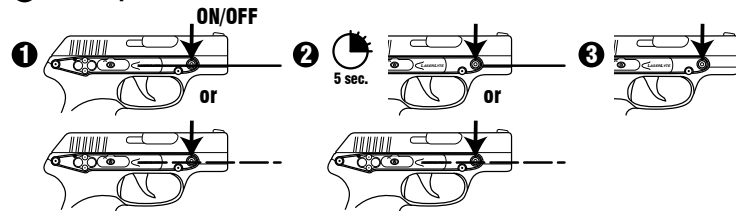
Unload firearm.

Attach danger label to side of gun near laser with arrow pointing toward front sight.



Activation:

- ① Press once turns laser on: constant or pulse
- ② Press and hold for 5 seconds to change mode.
- ③ Second press turns laser off.



Laser Sight In:

- ① Use the provided .035 Allen wrench to adjust the sight.
- ② Always end adjustments on a clockwise turn.
- ③ Make final adjustments at shooting range.

