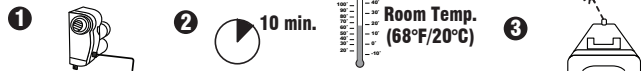


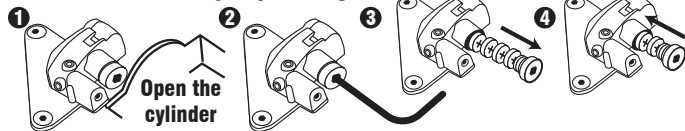
### Reset Process:

- 1 Back-out both adjustment screws.
- 2 Let laser sit for at least 10 minutes at room temperature (68°F/20°C).
- 3 If, within 20 minutes, the laser is not pointing up and left call customer service.



### Battery Installation: (4) 377

- 1 Open the cylinder of the gun.
- 2 Using provided wrench open battery cap.
- 3 Install new batteries.
- 4 Screw in battery cap and tighten.



**WARRANTY:**  
Three Year Limited  
Warranty.



**LASERLYTE**  
30 N. Alamos Dr. - Cottonwood, AZ 86326  
Phone 928-649-3201 - Fax 928-649-3970  
[www.LaserLyte.com](http://www.LaserLyte.com)



## SIDE MOUNT LASER



- Fits: ALL TAURUS® Revolvers & S&W® J-Frame Revolvers
- For Use With All Rubber Grips
- No Gunsmithing Required
- Includes All Hardware For Quick Installation
- Dual Laser Modes With Auto-Off Feature



REV 0213

## SIDE MOUNT LASER

FITS: ALL TAURUS® REVOLVERS & S&W® J-FRAME REVOLVERS

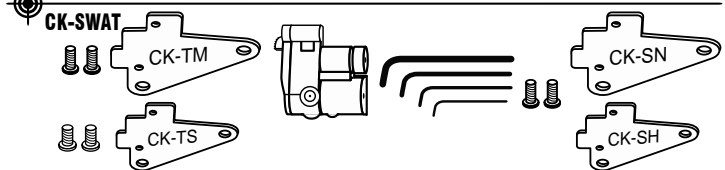
CK-SWAT

[www.LASERLYTE.com](http://www.LASERLYTE.com)



TAURUS INT.MFG.  
MIAMI, FL - USA

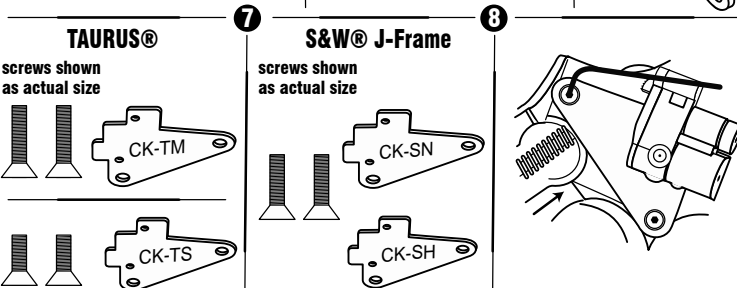
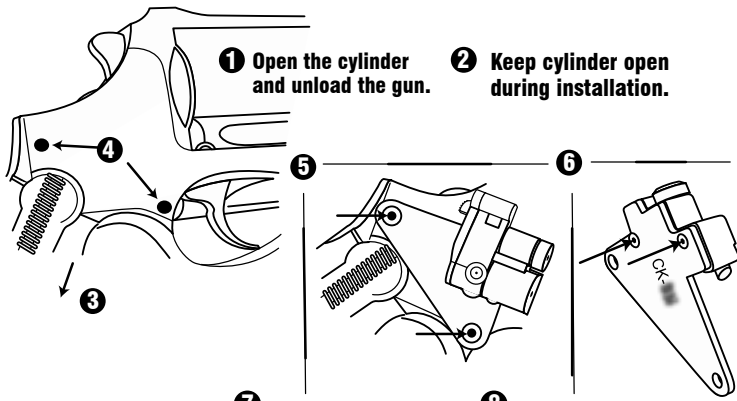
**Side Mount Laser Fits: All TAURUS® Revolvers & S&W® J-Frame Revolvers**



**Installation:**

*Attach danger label to slide of gun near laser with arrow pointing toward front sight.*

- 1 Open the cylinder on your revolver and unload the gun.
- 2 Keep your cylinder open during installation.
- 3 Remove your grip on the revolver.
- 4 Remove the two side plate screws and store.
- 5 Align the plate holes with the screw holes on the revolver.  
 CK-TM: Fits the Taurus Judge and larger frames  
 CK-TS: Fits M85 and small frames  
 CK-SN: Fits model 642 and other internal hammer frames  
 CK-SH: Fits model 637 and other exposed/shrouded hammer frames
- 6 If needed remount the laser on the correct plate and tighten screws.
- 7 Mount the plate to the side of the revolver using the provided screws.  
 (Select correct sized screws shown as actual size)
- 8 Tighten your screws down until snug and replace grip.

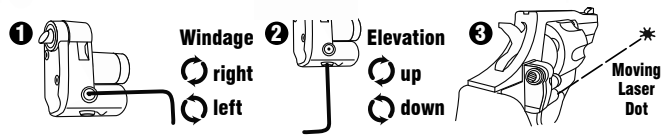


**Laser Sight In:**

Assemble weapon and make safe.

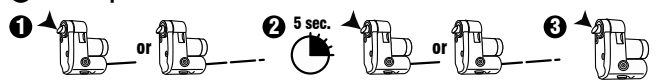
Align front and rear sights by shining laser dot 21 ft. (recommended) away in a safe direction

- 1 First! Use windage screw to adjust laser dot .5 inch to the left of front sight.
- 2 Second! Use elevation screw to adjust laser dot .5 inch above front sight.
- 3 Third! Use both screws in 1/4 turn increments to move dot above front sight.  
 Make final adjustments at shooting range. (Always end adjustments on a clockwise turn.)



**Activation:**

- 1 Press once turns laser on: constant or pulse.
- 2 Press and hold for 5 seconds to change mode.
- 3 Second: press turns laser off.



**Auto-Off feature:**

- After 5 minutes in any mode, warning pulse will activate.
- After 1 minute in warning pulse mode, laser will turn off.
- Press the switch during warning pulse for laser reset.

