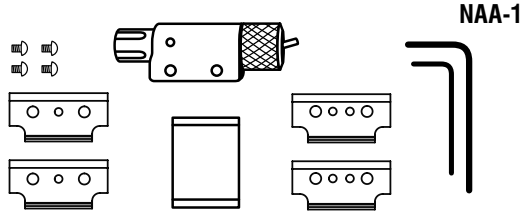


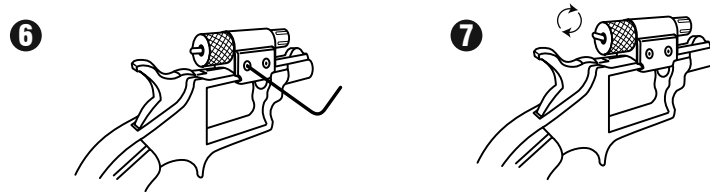
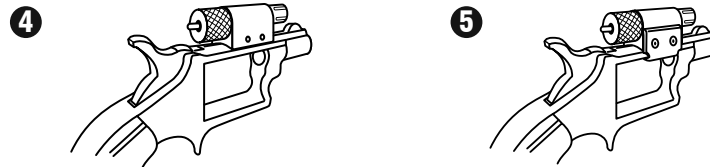
## NORTH AMERICAN ARMS 22LR, 22MAG



### Installation:

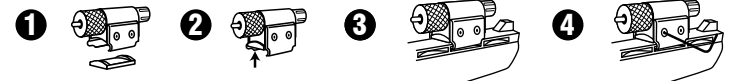
- 1 REMOVE THE CYLINDER AND UNLOAD YOUR FIREARM!
- 2 Attach danger label to gun or laser with arrow pointing toward front sight.
- 3 Find the correct clamp for your gun. (22lr or 22mag)
- 4 Place the laser on top of the frame over the cylinder opening.
- 5 Place the clamps on both sides of the laser, line up holes thread screws.
- 6 Tighten the screws.
- 7 Turn the rear cap until the toggle switch is facing up away from gun.

- 1 REMOVE THE CYLINDER AND UNLOAD YOUR FIREARM!
- 2 Attach danger label to gun or laser with arrow pointing toward front sight.



### Installation for the Black Widow & Mini Master Using the Provided Spacer:

- 1 Use the spacer with the 22LR clamps
- 2 Put the spacer under laser
- 3 Put clamps into rib vent
- 4 Tighten



### Adjustment:

- 1 Using the windage and elevation screws adjust the laser close to barrel alignment. Always end in a clock-wise motion.
- 2 At the range from a steady rest fire and adjust dot until it corresponds to bullet impact.

