



REAR SIGHT LASER

- Fits all Taurus® Slim Pistols
- Replaces factory rear sight
- Includes all hardware for installation
- Fits virtually all holsters
- Dual laser modes with LED emissions indicator



REAR SIGHT LASER - TAURUS® SLIM



RL-TS



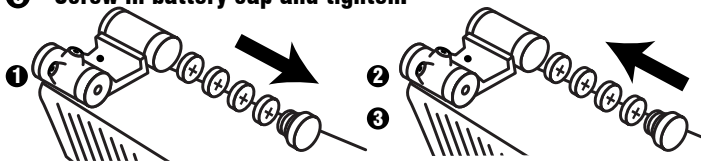
www.LASERLYTE.com

Uninstall:

- 1 Follow steps 1-3 in Installation Instructions.
- 2 Back out setscrew in center of Laser.
- 3 Using brass punch put the narrow end of the punch on the flat surface of the laser dove tail.
- 4 Using a small hammer drive the laser out from right to left.
- 5 Back out laser setscrews until flush.
- 6 Wait 15 minutes for adjustment reset and reinstall if desired.

Battery Installation: (4) 377

- 1 Unscrew battery cap and remove batteries.
- 2 Install new batteries.
- 3 Screw in battery cap and tighten.



WARRANTY:
One Year Limited
Warranty.



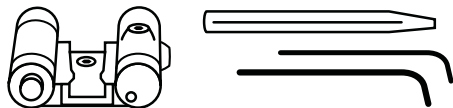
A Division of P&L Industries
101 Airpark Road - Cottonwood, AZ 86326
Phone 928-649-3201 - Fax 928-649-3970
www.LaserLyte.com



REV0518

Rear Sight Laser for Taurus Slim Pistols

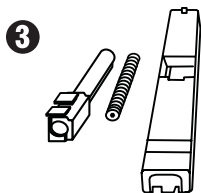
RL-TS



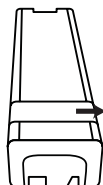
Installation:

- 1 UNLOAD YOUR FIREARM!**
- 2 Attach danger label to slide of gun near laser with arrow pointing toward front sight.**
- 3 Remove slide from frame, then remove spring and barrel.**
- 4 Remove rear sight from slide. Caution: Only move sight from left to right.**
- 5 With laser facing toward the front, start the laser dove tail into the right side of the slide.**
- 6 Using a small hammer, align the brass punch to the side of dovetail then tap the punch until laser is centered in slide.**
- 7 Using the included .050 Allen wrench, tighten locking screw in the center of laser.**

- 1 UNLOAD YOUR FIREARM!**

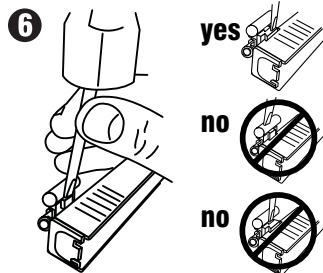
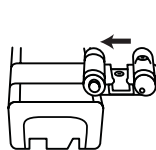


4



- 2 Attach danger label to slide of gun near laser with arrow pointing toward front sight.**

5



yes

no

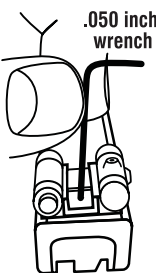
no

yes

no

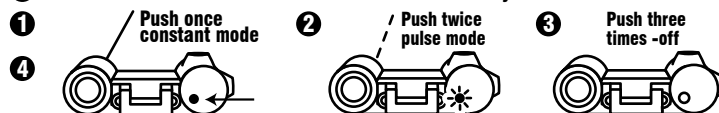
no

7



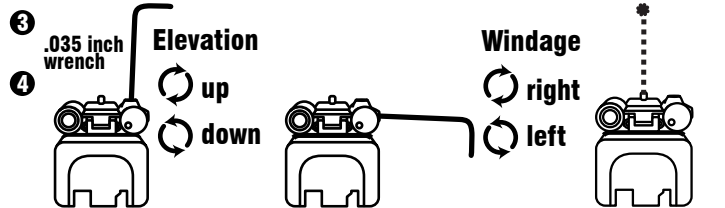
Activation:

- 1 Push button once and the laser will be on constant mode.**
- 2 Push button twice and the laser will be on pulse mode.**
- 3 Push button three times the laser will turn off.**
- 4 The small L.E.D. on the back will indicate what mode you are in.**



Laser Sight In:

- 1 Assemble barrel and spring into slide and then install back onto gun.**
- 2 Make sure your firearm is unloaded and always point in a safe direction.**
- 3 Use the provided .035 Allen wrench to adjust the sight.**
- 4 Always end adjustments on a clockwise turn.**
- 5 Make final adjustments at shooting range.**



Moving Laser Dot